

SAILING INSTRUCTIONS

SAP 2017 International 505 World Championship

Annapolis, MD, USA,
19-29 September 2017

The co-organizing authorities (OA) are Severn Sailing Association (SSA) and Eastport Yacht Club (EYC) in conjunction with the 505 Class Association American Section, the International 505 Yacht Racing Association, and Title Partner SAP.

Event website: <http://505worlds2017.com>

The notation '[DP]' in a rule in the sailing instructions (SIs) or notice of race (NoR) means that the penalty for a breach of that rule may, at the discretion of the jury, be less than disqualification. The notation '[NP]' in a rule of the SIs or NoR means that a boat may not protest another boat for breaking that rule. This changes RRS 60.1(a).

1 RULES

- 1.1 The regatta will be governed by the rules as defined in The Racing Rules of Sailing (RRS).
- 1.2 The only US Sailing prescriptions that apply are stated in Addendum A to the Notice of Race (NoR).
- 1.3 **[NP] [DP]** RRS 40 is replaced with: "Competitors shall wear personal flotation devices, at all times when on the water, except briefly while changing or adjusting clothing or personal equipment. Wet suits and dry suits are not personal flotation devices. Inflatable flotation devices are not acceptable."
- 1.4 **[NP][DP]** "Rules for Handling Tracking Units" will apply and will be available on the notice board.
- 1.5 If there is a conflict between languages the English text will take precedence.

2 NOTICES TO COMPETITORS

- 2.1 Notices to competitors will be posted on the official notice board located online at <https://505worlds2017.com>. A digital screen showing the notice board will be available in the SAP Sailors' Lounge and at the race office located on the 2nd floor of the SSA.
- 2.2 A daily competitor and coach meeting will be held on the steps of the SSA clubhouse 2 hours before the scheduled warning signal for the first race of each day of the regatta.

3 CHANGES TO SAILING INSTRUCTIONS

- 3.1 Any change to the schedule of races will be posted by 2000 on the day before it will take effect.

3.2 Any other change to the sailing instructions will be posted no later than 90 minutes before the scheduled warning signal for the first race on the day it will take effect.

4 SIGNALS MADE ASHORE

4.1 Signals made ashore will be displayed on the flagpole in front of the SSA clubhouse.

4.2 When flag AP is displayed ashore, '1 minute' is replaced with 'not less than 75 minutes' in RRS Race Signals.

4.3 [DP] Flag H displayed with one sound means 'Boats shall not launch until flag H is removed.'

5 SCHEDULE OF RACES

5.1 Racing days will be Sunday, 24 September through Friday, 29 September, except for a lay day on Wednesday, 27 September.

5.2 The first warning signal is scheduled at 1100 each day of racing.

5.3 Ten races are scheduled.

5.4 2 or 3 races may be sailed each day, except that on the last scheduled day of racing, only 1 race will be sailed unless more are required to constitute a championship.

5.5 On the lay day, racing will only be held if the OA concludes it is necessary to complete a minimum of 5 races by the end of the regatta.

5.6 On the last scheduled day of racing, no warning signal will be made after 1500.

6 CLASS FLAG

The class flag will be a flag W.

7 RACING AREAS

The racing area will be on the Chesapeake Bay off the mouth of the Severn River as shown in Attachment A. The intended initial location of the starting area will be posted on the notice board each morning prior to the start of the morning briefing.

8 COURSES

8.1 Courses are shown in Attachment B.

8.2 No later than the warning signal, the race committee signal vessel will display the course and approximate compass bearing to mark 1.

8.3 If either gate mark 2s or 2p is missing, boats shall round the remaining gate mark to port.

9 MARKS

9.1 Marks 1, 2s, 2p, and 3 will be orange cylinders. Mark 1a will be a smaller orange cylinder.

9.2 As provided in SI 11, new marks will be green or orange tetrahedrons.

9.3 The starting marks will be the port limit mark (small orange cylinder laid close to the race committee signal vessel), the pathfinder, and the gate boat (displaying a large orange feather flag).

9.4 The finishing marks will be a race committee vessels on each end of the finishing line.

10 THE START

10.1 Races will be started using RRS 26.

10.2 To alert boats that a race will begin soon, the race committee signal vessel will display an orange flag, with one sound at least five minutes before a warning signal is displayed.

- 10.3 If a boat breaks an instruction marked [GP] and is identified, she will be disqualified without a hearing, even if the race is restarted, re-sailed, or rescheduled. If a general recall is signaled or the race is abandoned after the starting signal, the race committee will display her sail number for at least 3 minutes before the next warning signal for that race, and if the race is restarted or resailed she shall not sail in it. However, a boat may participate in the restarted race providing she notifies the race committee prior to the warning signal that she intends to protest another boat and/or request redress in connection with the incident. If she sails in the race and does not file a valid protest or request for redress, she shall be scored DNE. If her protest is dismissed or her request for redress is denied, she shall be scored DSQ. This changes RRS 36, 62.2, 63.1, and A5.
- 10.4 Prior to the warning signal, the race committee signal vessel will display the approximate time in seconds between the starting signal and the time at which the gate boat will stop at the starboard end of the starting line.
- 10.5 The race committee will appoint the pathfinder. The pathfinder will normally be the first boat 10th place or later in the previous race that is able to race and has not yet served as a pathfinder.
- 10.6 The sail number of the pathfinder for the first scheduled race of the day will be posted on the official notice board and on the race committee signal vessel. For subsequent races each day, the sail number of the pathfinder will be posted on the race committee signal vessel, as soon as practical after the completion of the previous race.
- 10.7 **[NP] [GP]** Prior to the warning signal the pathfinder shall report to the gate boat (displaying a large orange feather flag and located near the race committee signal vessel) and follow the race committee's instructions.
- 10.8 **[NP]** Shortly before the starting signal the pathfinder will position itself near the port limit mark (laid close to the race committee signal vessel) and as soon as practical after the starting signal (and within 10 seconds) will sail from the port limit mark on a close-hauled port tack. The gate boat will keep station close astern and slightly to leeward of the pathfinder.
- 10.9 The starting line (except for the pathfinder) will be between the port limit mark and the center of the stern of the gate boat.
- 10.10 **[GP]** All boats (except for the pathfinder) shall start by crossing the starting line on starboard tack after the starting signal and before the gate closes.
- 10.11 **[GP]** A boat that has not already started correctly, and that is on the course side of the gate boat while the gate is open, shall not cross the starting line from the course side.
- 10.12 **[NP]** The pathfinder shall sail a close-hauled course until it is released by hail from the gate boat, after which the pathfinder has started, ceases to be a starting mark, and may continue or tack onto starboard tack.
- 10.13 After the release of the pathfinder, the gate boat will continue its course and speed until the gate has been opened for the period signaled in SI 10.4. It will then stop, make a long sound signal, drift for at least one minute, and signal the close of the gate by lowering their orange flag with a short sound signal.
- 10.14 **[NP]** A boat that has not started at the close of the gate will be scored DNS without a hearing. This changes RRS A4.
- 10.15 **[GP]** After the preparatory signal, a boat shall not threaten the unobstructed sailing of the pathfinder, and shall not interfere with or try to pass between the pathfinder and the gate boat, or cause another boat to interfere in these ways.

11 CHANGE OF THE NEXT LEG OF THE COURSE

To change the next leg of the course, the race committee will lay a new mark (or move the finishing line) and remove the original mark as soon as practicable. When in a subsequent change, a new mark is replaced, it will be replaced by an original mark.

12 THE FINISH

The finishing line will be between the staffs displaying orange flags on race committee finishing vessels on each end of the line.

13 TIME LIMITS

- 13.1 If no boat has passed mark 1 within 45 minutes of the start, the race will be abandoned.
- 13.2 If no boat sails the course and finishes within 150 minutes, the race will be abandoned.
- 13.3 Boats still racing and failing to finish within 20 minutes after the first boat sails the course and finishes, and not subsequently retiring, penalized or given redress, will be scored TLE (Time Limit Expired, see SI 16.4) without a hearing. This changes RRS 35, 63.1, A4 and A5.

14 PENALTY SYSTEM

- 14.1 RRS Appendix P, Special Procedures for RRS 42, will apply as modified in the sailing instructions.
- 14.2 RRS 44.1 and P2.1 are changed so that the Two-Turns Penalty is replaced by the One-Turn Penalty.
- 14.3 RRS Appendix T1, Post-Race Penalties, will apply.

15 PROTESTS AND REQUESTS FOR REDRESS

- 15.1 Protest forms are available at the race office located on the 2nd floor of the SSA Clubhouse. Protests and requests for redress or reopening shall be delivered there within the appropriate time limit. Optionally, protests and requests for redress may be emailed to: raceoffice.505worlds2017@gmail.com.
- 15.2 The protest time limit is 60 minutes after the arrival of the race committee signal vessel at the dock. The race committee will post its arrival time on the notice board.
- 15.3 Post-Race Penalties may be taken by submitting a Penalty Acceptance Form at the race office. Optionally, Penalty Acceptance Forms may be submitted electronically on the event website or emailed to: raceoffice.505worlds2017@gmail.com.
- 15.4 Scoring inquiries may be made by submitting a Scoring Inquiry Form at the race office. Optionally, scoring inquiries may be submitted electronically on the event website or emailed to: raceoffice.505worlds2017@gmail.com.
- 15.5 Notices will be posted on the official notice board no later than 30 minutes after the protest time limit to inform competitors of hearings in which they are parties or named as witnesses and the location of the hearing. Hearings will be held as soon as practical after sailing.
- 15.6 Notices of protests by the race committee, technical committee or jury will be posted on the official notice board to inform boats under RRS 61.1(b).
- 15.7 On the last scheduled day of racing a request for redress based on a jury decision shall be delivered no later than 30 minutes after the decision was posted. This changes RRS 62.2.
- 15.8 Decisions of the international jury will be final as provided in RRS 70.5.

16 SCORING

- 16.1 RRS Appendix A4, Low Point System, will apply.
- 16.2 Four races are required to be completed to constitute a series.

- 16.3 (a) When fewer than 5 races have been completed, a boat's series score will be the total of her race scores.
(b) When from 5 to 7 races have been completed, a boat's series score will be the total of her race scores excluding her worst score.
(c) When 8 or more races have been completed, a boat's series score will be the total of her race scores excluding her 2 worst scores.
- 16.4 The score (prior to application of other penalties) for boats scored TLE will be points equal to the number of boats that sailed the course and finished within the finishing window plus two points by the race committee without a hearing. This changes RRS A4.2, A5, and A11.

17 [DP] [NP] SAFETY REGULATIONS

- 17.1 Check-out and check-in: When departing from launching area, boats shall pass between SSA and Green Can "SC1" at the entrance to Spa Creek (leaving "SC1" to port). Mainsails should be up to allow identification of all boats. Likewise, when returning to the harbor, boats shall leave "SC1" to starboard.
- 17.2 A boat that retires from a race shall notify the race committee as soon as possible.
- 17.3 If the race committee signals flags N over A or N over H, all boats shall return to the harbor immediately.
- 17.4 A boat may not exercise right of way, cross in proximity to, or interfere with reasonable transit of the race area by commercial ships, tugs, or barges. Boats must take evasive action well in advance of a potentially dangerous situation. The US Coast Guard, ship captains, and bay pilots have been encouraged to report any incident they observe.
- 17.5 The race committee or jury may protest a boat for breaking SI 17.4 based on information received from any source. The protest time limit does not apply. This changes RRS 60.2, 60.3, and 61.3.

18 [DP] REPLACEMENT OF CREW OR EQUIPMENT

- 18.1 Substitution of competitors will not be allowed without prior written approval of the technical committee.
- 18.2 Substitution of damaged or lost equipment will not be allowed unless authorized by the technical committee. Requests for substitution shall be made to the technical committee at the first reasonable opportunity.
- 18.3 Request to the technical committee can be made at the race office, or emailed to: raceoffice.505worlds2017@gmail.com.

19 EQUIPMENT AND MEASUREMENT CHECKS

A boat or its equipment may be inspected by the technical committee at any time for compliance with the class rules and sailing instructions. On the water, a boat can be instructed by the technical committee to proceed immediately to a designated area for inspection.

20 [DP][NP] EVENT ADVERTISING AND MEDIA

Boats shall display event advertising in the form of bow stickers supplied by the organizing authority. If this rule is broken, World Sailing Regulation 20.9.2 applies.

21 [DP] SUPPORT VESSELS

- 21.1 All support persons shall comply with the Support Vessel Regulations published on the notice board.

21.2 From the time a boat leaves the harbor until returning to the harbor after racing, competitors shall not receive any on-water assistance whatsoever from un-registered support persons. If this rule is broken, the penalty will be in accordance with RRS 64.4(b).

22 [DP] TRASH DISPOSAL

Boats shall not intentionally put trash in the water. Trash may be placed aboard support, race committee and jury vessels. RRS 41 is changed to permit a boat to place trash on a race committee or jury vessel after her preparatory signal.

23 [DP] BERTHING

When ashore, all boats must be stored on their dollies within their assigned spaces at SSA. While sailing, boats' dollies must be stored in the assigned spaces.

24 [DP] RADIO COMMUNICATION

24.1 The race committee intends to use VHF radio channel 65A to communicate information to competing boats and support vessels. Competitors are encouraged to carry VHF radios for safety.

24.2 Except in an emergency, a boat that is racing shall not make voice or data transmissions and shall not receive voice or data communication that is not available to all boats except when using equipment provided by the OA.

25 PRIZES

25.1 Prizes will be awarded as follows:

- (a) The top 10 teams overall
- (b) First place in each race
- (c) Top finishing female team
- (d) Top finishing mixed gender team
- (e) Top finishing youth team (both team members 25 years or younger, born on or after 25 September 1991)
- (f) Top finishing master helm (65 years and older, born on or before 24 September 1952)
- (g) Top finishing master crew (55 years and older, born on or before 24 September 1962)

25.2 Perpetual awards will also be awarded in accordance with the 505 class rules and traditions.

25.3 Additional awards may be given at the discretion of the OA.

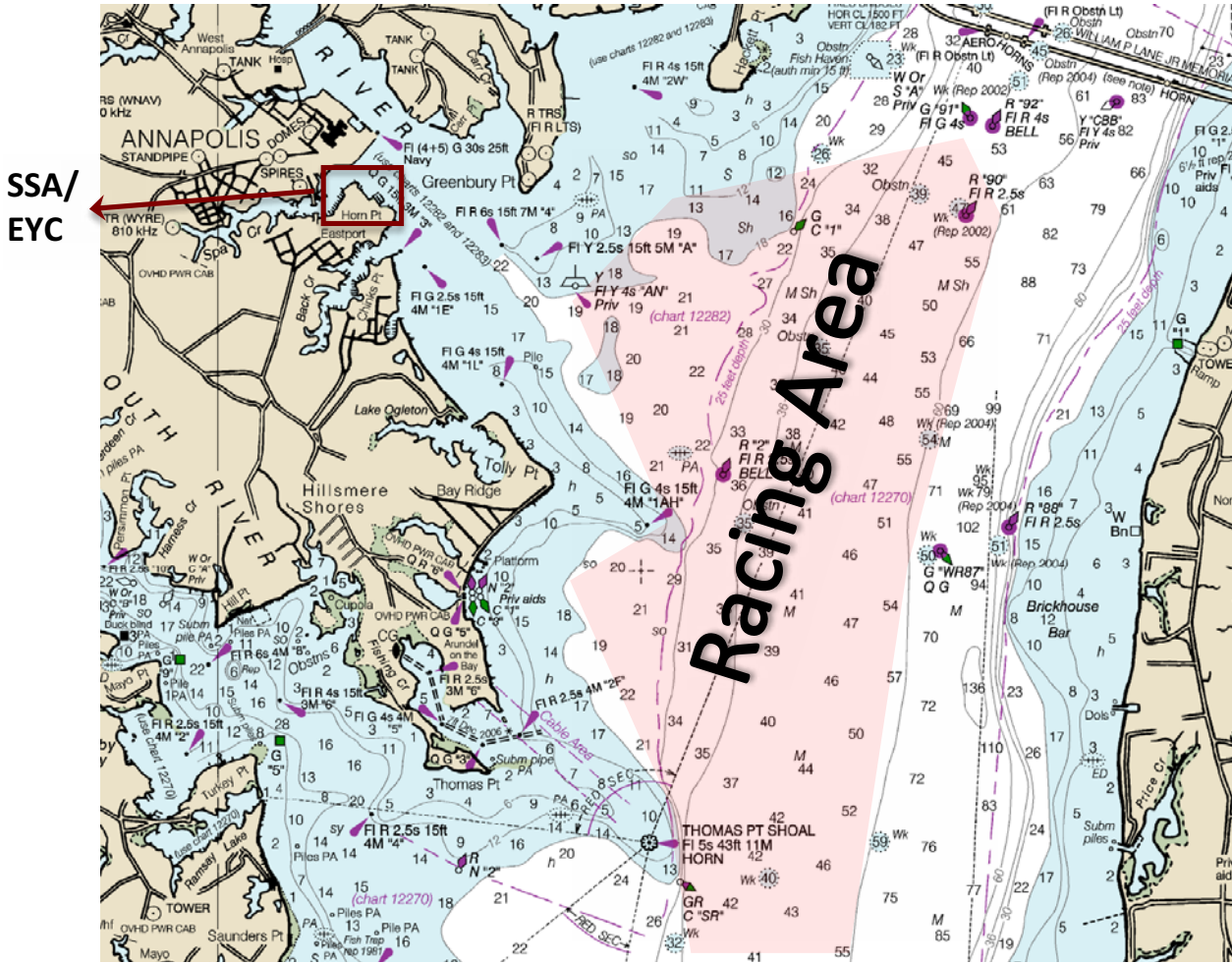
26 DISCLAIMER OF LIABILITY

Competitors participate in the regatta entirely at their own risk. See RRS 4, Decision to Race. The organizing authority will not accept any liability for material damage or personal injury or death sustained in conjunction with or prior to, during, or after the regatta.

27 INSURANCE

Each participating boat shall be insured with valid third-party liability insurance with a minimum cover of \$300,000 USD per event or the equivalent.

ATTACHMENT A - RACING AREA



ATTACHMENT B - COURSES

<p>TW4</p> <p>Mark rounding order: Start-1-1a-2s/2p- 1-1a-3-2s/2p- 1-1a-2s/2p - Finish</p>	<p>TL3</p> <p>Mark rounding order: Start-1-1a-2s/2p- 1-1a-3-2s/2p- 1-1a-2p -Finish</p>
<p>WA3</p> <p>Mark rounding order: Start-1-1a-2s/2p- 1-1a-2s/2p- Finish</p>	<p>LA2</p> <p>Mark rounding order: Start-1-1a-2s/2p- 1-1a-2p-Finish</p>
<p>WA4</p> <p>Mark rounding order: Start-1-1a-2s/2p- 1-1a-2s/2p- 1-1a-2s/2p- Finish</p>	<p>LA3</p> <p>Mark rounding order: Start-1-1a-2s/2p- 1-1a-2s/2p- 1-1a-2p-Finish</p>